



RECP #: 752852  
 RECORDED 5/8/2019 AT 1:21 PM BK# 2620 PG# 1894  
 Debra K. Lee, CLERK OF LARAMIE COUNTY, WY PAGE 1 OF 1

# STATE OF WYOMING CORNER RECORD

(In compliance with the CORNER PERPETUATION AND FILING ACT, Wyoming Statutes, 1997 Section 33-29-140, et. seq., and the Rules and Regulations of the Board of Registrations for Professional Engineers and Professional Land Surveyors)

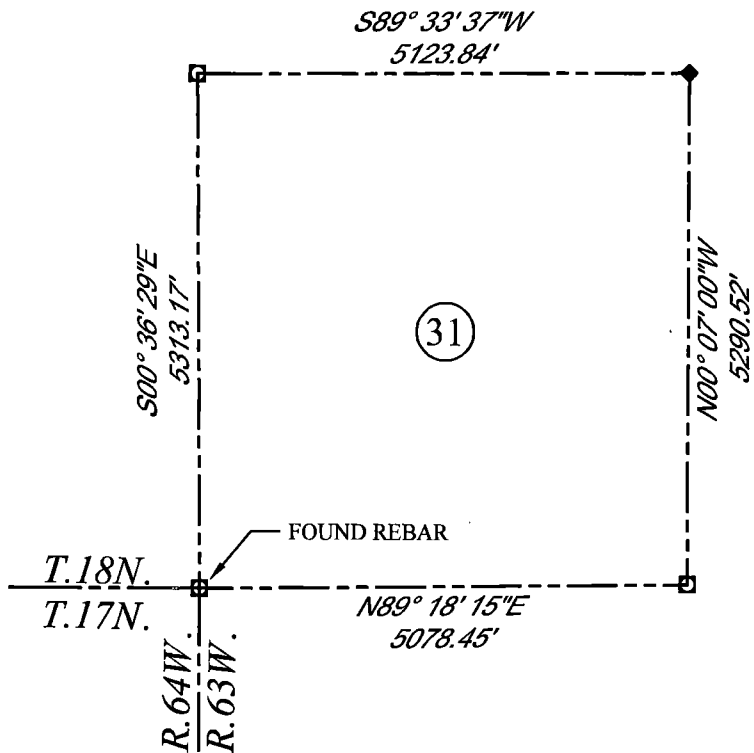
## SOUTHWEST CORNER SECTION 31, T. 18 N., R. 63 W., 6TH P.M., LARAMIE COUNTY, WYOMING

GLO: SET A SANDSTONE 22X12X8, 16 IN. DEEP, WITH SIX MARKS ON EACH OF ITS FOUR FACES AND SET TO THE CARDINAL POINTS, AND RAISED A MOUND OF STONES AROUND IT FOR CORNER TO TPS. 17 AND 18 NORTH, RANGE 63 AND 64 WEST, OF THE 6TH P.M.

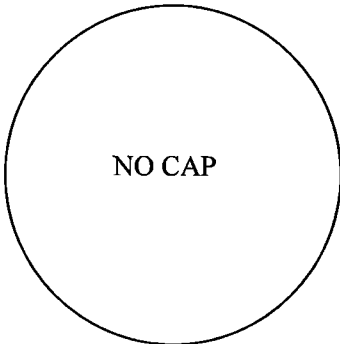
FOUND: REBAR, NO CAP, SET AT SURFACE WITH A MOUND OF STONES SET ON THE EAST SIDE.



SCALE: NONE  
 NORTH DETERMINED BY  
 G.P.S OBSERVATIONS



FOUND: REBAR, NO CAP



**LEGEND:**

- FOUND BLM CAP
- FOUND USFS CAP
- FOUND STONE
- FOUND PRIVATE MONUMENT
- ◆ CALCULATED POSITION
- ▲ SET MONUMENT (LS10245)
- SECTION LINE

DATE OF FIELD WORK: 8/22/2018 OFFICE REFERENCE: MERIDEN

**CROSS INDEX DIAGRAM**

	1	2	3	4	5	6	7	8	9	10	11	12	13	14	15	16	17	18	19	20	21	22	23	24	25
A																									
B																									
C																									
D																									
E																									
F																									
G																									
H																									
J																									
K																									
L																									
M																									
N																									
O																									
P																									
Q																									
R																									
S																									
T																									
U																									
V																									
W																									
X																									
Y																									
Z																									

WOOD  
 2615 AVIATION DRIVE  
 SHERIDAN, WY 82801  
 PH: 307-675-6400



THIS CORNER RECORD WAS  
 PREPARED BY ME OR UNDER  
 MY DIRECTION AND  
 SUPERVISION,  
 SEAL AND SIGNATURE

